

WHAT TO DO A CODE OF CONDUCT

FOR HEALTHCARE PROFESSIONALS



PPEs are important for your protection, but it's not enough if you do not follow infection control protocols (correct PPEs management, hand hygiene, work surface hygiene...)



PPEs & UNIFORM

Wear and remove PPEs correctly and wear a clean uniform on every shift



DO NOT TOUCH

Avoid touching your eyes, nose and mouth when you are not wearing PPE



TALK

Wear a surgical mask while talking to another healthcare worker or a family member at a close range



WITHOUT PPEs

Keep a safe distance with other healthcare professionals



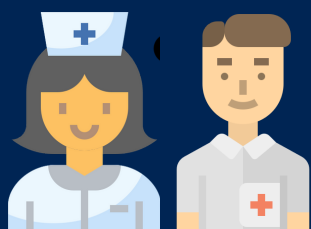
TIME BREAK

Schedule a time break by taking turn with another colleague. Avoid coexistence with others in the refreshment area (pay Attention to safety distance)



HAND HYGIENE

Wash your hands with soap and water and use an alcohol-based solution before and after entering the refreshment area



BRIEFING

Keep a high alert on your behaviors (safety distance, hand hygiene, do not touch eyes, nose and mouth) during briefing moments



CARELESSNESS

If you see any carelessness that may increase the risk of spreading SARS-CoV-2, remind your colleagues the infection control protocols



H. WORKER HYGIENE

Take a shower at the end of the shift. If it is not possible, perform good partial hygiene before putting on your clothes and take a shower as soon as you return home



ANY DOUBT?

If you have doubts ask! Experts can help you