

# WHAT TO DO

## A CODE OF CONDUCT

FOR HEALTHCARE PROFESSIONALS

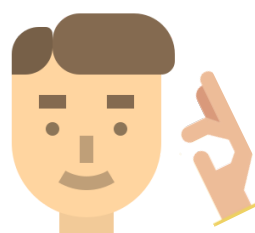


**PPEs are important for your protection, but it's not enough if you do not follow infection control protocols (correct PPEs management, hand hygiene, work surface hygiene...)**



### PPEs & UNIFORM

Wear and remove PPEs correctly and wear a clean uniform on every shift



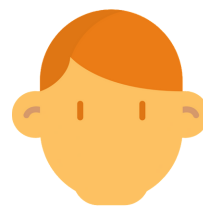
### DO NOT TOUCH

Avoid touching your eyes, nose and mouth when you are not wearing PPE



### TALK

Wear a surgical mask while talking to another healthcare worker or a family member at a close range



### WITHOUT PPEs

Keep a safe distance with other healthcare professionals



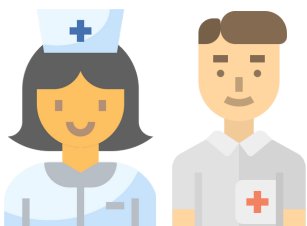
### TIME BREAK

Schedule a time break by taking turn with another colleague. Avoid coexistence with others in the refreshment area (pay Attention to safety distance)



### HAND HYGIENE

Wash your hands with soap and water and use an alcohol-based solution before and after entering the refreshment area



### BRIEFING

Keep a high alert on your behaviors (safety distance, hand hygiene, do not touch eyes, nose and mouth) during briefing moments



### CARELESSNESS

If you see any carelessness that may increase the risk of spreading SARS-CoV-2, remind your colleagues the infection control protocols



### H. WORKER HYGIENE

Take a shower at the end of the shift. If it is not possible, perform good partial hygiene before putting on your clothes and take a shower as soon as you return home



### ANY DOUBT?

If you have doubts ask! Experts can help you